



BioWood Fire Retardant Composite Screening

Why you should choose BioWood Composite Screening...

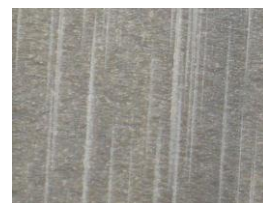
- *Lightweight and durable*
- *Termite resistant*
- *Fire retardant & water resistant*
- *Mould and mildew resistant*
- *An added value to your investment*
- *Easy installation*
- *A proven time-tested product in Australia*
- *Can be re-sanded and re-sealed*
- *No splinters, cracks & rot*
- *Ideal for residential and commercial use*

*This product has a 7 year limited warranty.
Refer to our website terms and conditions of warranty details**

Retaining the natural timber look, low maintenance and environmentally friendly!



Spotted Gum *



Weather Wood *



Red Cedar *



Screening Solid Profile
Product Code: WPO6516

Spec: 65 x 16 x 4800 or 5700 mm



Screening Hollow Core Profile
Product Code: FS09025

Spec: 90 x 25 x 5600 or 5700 mm



www.biowoodaustralia.com.au

* Colours shown are within the limits of printing.

What is BioWood Fire Retardant Composite Screening?

BioWood Fire Retardant Composite Screening is a proprietary composite made by combining wood waste with polymer and additives. It is this blend that gives BioWood Fire Retardant Composite Screening its unique benefits over solid timber and other olefin (Polyethylene and Polypropylene) composite products. BioWood Fire Retardant Composite Screening looks and feels just like timber but it is sustainable and 100% recyclable.

Why is BioWood Fire Retardant Composite Screening than traditional timber?

BioWood Fire Retardant Composite Screening, due to its content of wood fibre, contains all the attributes of timber such as its appearance, hardness and warmth underfoot but does not have the inherent shortcomings of solid timber such as cracking, splitting and rot. In addition, when subject to fire, BioWood Fire Retardant Composite Screening, unlike timber and many other composites, is self-extinguishing. BioWood Fire Retardant Composite Screening is manufactured in a low consumption energy which produces low carbon foot print.

How durable is BioWood Fire Retardant Composite Screening?

BioWood Fire Retardant Composite Screening is water and termite resistant and does not promote the growth of mould and mildew. Stains and scratches are also easily dealt with (refer to the maintenance section on the installation guide). UV inhibitors added at the point of manufacture ensure minimum colour fading and maximum service life.

Is BioWood Fire Retardant Composite Screening suitable around pools & safe?

BioWood Fire Retardant Composite Screening is very much at home around pools, spas, boardwalks and all marine environments as it is impervious to salt water although.. Also, as BioWood Fire Retardant Composite Screening will not splinter.

How difficult is BioWood Fire Retardant Composite Screening to install & does it need to be coated?

BioWood Fire Retardant Composite Screening is simple and cost effective to install, when installed in accordance with the installation guide, which is available as a hard copy or from the BioWood Fire Retardant Composite Screening website. Normal wood-working tools can be used to drill, rout, sand and rip BioWood Fire Retardant Composite Screening to create the perfect screening. Waste is kept to a minimum as BioWood Fire Retardant Composite Screening is supplied in 4800 or 5700 metre lengths. BioWood Fire Retardant Composite Screening products are supplied uncoated. Once installed we recommend that you apply two coats of water based UV stabilised coating. Like all building products, it is recommended that good safety disciplines be adhered to by providing adequate ventilation when machining BioWood Fire Retardant Composite Screening to avoid inhaling dust.

What is the warranty of BioWood Fire Retardant Composite Screening?

BioWood Fire Retardant Composite Screening products have been applied in the residential & commercial projects in Australia. BioWood Fire Retardant Composite Screening products are backed by a 7 year warranty.

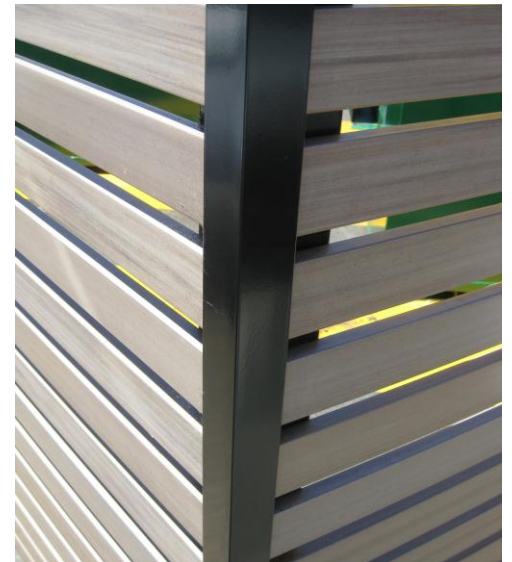
Manufactured by:



Trusted by:



** Colours shown are within the limits of printing.*



BioWood products are sourced through a chain-of-custody forest certification scheme – PEFC.

Other Profiles:



Screening Solid Profile
Product Code: WP16016
Spec: 160 x 16 x 5700 mm



Screening Hollow Core Profile
Product Code: S4S05050
Spec: 50 x 50 x 5600 or 5700 mm

Other sizes available
Please enquire at our office

Appointed Stockist/Distributor:



92- 94 Lilyfield Road, Rozelle NSW 2039
02 9810 4177

www.biowoodaustralia.com.au